



Everything you need to know about

MANAGEMENT OF RHEUMATIC AUTOIMMUNE DISEASES

Rheumatology
&
Physical Medicine Department



NEW MOWAT HOSPITAL
CARING FOR GENERATIONS



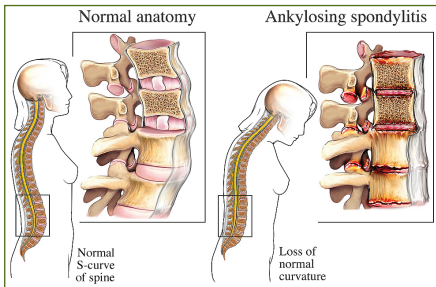
www.newmowat.com

...IN SALMIYA

(965) 1 - 82 6666

An **autoimmune disorder** is a condition that occurs when the immune system mistakenly attacks and destroys healthy body tissue. There are more than 80 different types of autoimmune disorders.

Normally the immune system's army of white blood cells helps to protect the body from harmful substances, but in patients with an autoimmune disorder, the immune system can't tell the difference between healthy body tissue and antigens. The result is an immune response that destroys normal body tissues (especially the joints).



In the Rheumatology and Physical Medicine Department the following autoimmune rheumatic diseases could be managed by the advanced biological agents and immunosuppressive medications in addition to the rehabilitative modalities:

- Ankylosing spondylitis
- Rheumatoid Arthritis
- Systemic Lupus Erythematosus
- Sjogren disease
- Systemic sclerosis
- Rheumatic fever
- Still disease
- Vasculitis



For more information and appointment scheduling, please call ext. **1712 / 1748**



NEW MOWASAT HOSPITAL
CARING FOR GENERATIONS



www.newmowasat.com

...IN SALMIYA

(965) 1 - 82 6666